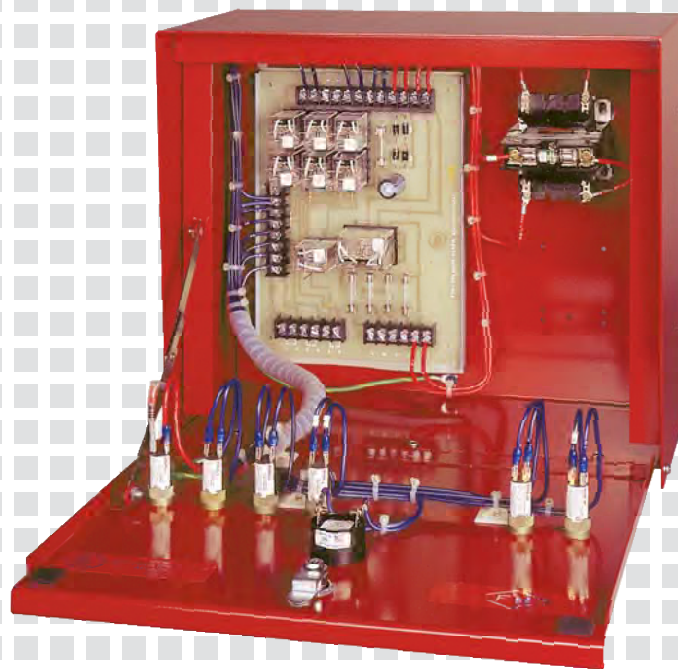



Alarm Panels



Firetrol[®]


EMERSON[™]
Network Power

FTA200 Alarm Panels

Firetrol® FTA200 alarm panels are designed to meet the NFPA 20 specifications requiring a remote alarm panel when the pump house or pump room is not constantly attended. The alarm panel must be installed in a location that is under supervision at all times.

Approvals — Firetrol alarm panels are listed by Underwriters Laboratories, Inc., in accordance with UL508, Standard for Industrial Controls, certified by CSA, Standard for Industrial Control Equipment (cUL), and approved by Factory Mutual. They are designed to meet or exceed the requirements of the approving authorities listed above as well as NFPA 20, Installation of Centrifugal Fire Pumps.

Enclosures — The standard enclosures are NEMA Type 2 (IEC IP11), drip-proof for indoor wall mounting. The standard enclosure color is red.

Standard Features — The following are included as standard as shown with each alarm panel type:

Type A — Designed for use with electric motor driven fire pump controllers, they provide indication for the following conditions:

- Supervisory Voltage Normal (Audible & Visible)
- Pump Operating (Audible & Visible)
- Pump Phase Failure (Audible & Visible)
- Pump Phase Reversal (Audible & Visible)

Type F — Designed for use with diesel engine driven fire pump controllers, they provide indication for the following conditions:

- Supervisory Voltage Normal (Visible Only)
- Engine Trouble (Audible & Visible)
- Engine Running (Audible & Visible)
- Main Switch Mis-Set (Audible & Visible)

FTA200 alarm panels make use of printed circuit boards which provide reliable and trouble free service.

Mounted on the enclosure door are the pilot lights

for visible alarm indication, the audible device for audible alarm indication, the SILENCE ALARM push-button and the PUSH-TO-TEST push-button.

Each pilot light will illuminate to indicate its alarm condition and will remain lighted until the abnormal condition has been corrected. The audible alarm will sound when the alarm conditions occur and will continue to sound until the abnormal condition has been corrected or the SILENCE ALARM push-button has been pressed. Pressing the SILENCE ALARM push-button will silence the audible alarm but will not extinguish the pilot light. If another alarm condition occurs, the audible alarm will again sound until silenced by the SILENCE ALARM push-button or until the abnormal condition has been corrected.

The PUSH-TO-TEST push-button is supplied for manually testing the pilot lights, audible alarm and output circuits.

Options and Modifications — Refer to the Product Description sheet for a complete listing of Options and Modifications.



Emerson Network Power - Global Headquarters

1050 Dearborn Drive
Columbus, OH 43085
Tel +1 614 888 0246

EmersonNetworkPower.com

While every precaution has been taken to ensure accuracy and completeness herein, ASCO assumes no responsibility, and disclaims all liability, for damages resulting from use of this information or for any errors or omissions. Information and specifications are subject to change without notice. Emerson, Consider It Solved., Emerson Network Power, the Emerson Network Power Logo, ASCO, Firetrol and the Firetrol Logo are trademarks or registered trademarks of Emerson Electric Co. All other names and logos referred to are trade names, trademarks, or registered trademarks of their respective owners. ©2013 Emerson Electric Co. CB200-50 (A)

ASCO Power Technologies - Firetrol Brand Products

111 Corning Road, Suite 120
Cary, NC 27518
Tel +1 919 460 5200 • Fax +1 919 460 5250

Firetrol.com

EMERSON. CONSIDER IT SOLVED.™